

# The Outlook

---

*Magazine of Hope Baptist church  
March/April 2008*

*Our mission is to be Christ's body in the community,  
demonstrating the Kingdom of God and calling others to  
become his disciples.*



---

*Inside this issue...*

- |                |                                                    |
|----------------|----------------------------------------------------|
| <i>Page 3</i>  | <i>Spring has sprung !!</i>                        |
| <i>Page 9</i>  | <i>Give Thanks (and help fit the new kitchen!)</i> |
| <i>Page 10</i> | <i>News from Roger and Sheila Torpey in Spain</i>  |
| <i>Page 14</i> | <i>The Lord' s Prayer in Maori</i>                 |
| <i>Page 20</i> | <i>Letter from Plymouth Women' s Refuge</i>        |

# Life at Hope

---

## **Sundays 10.30 am Morning Worship** **Visitors are always welcome!**

On the 3<sup>rd</sup> Sunday of the month we share bread and wine as Jesus called us to do in remembrance of Him.

Family Services are normally on the last Sunday of each month – please check the diary in the centre pages of this magazine.

Coffee and tea are served at the back of the church after the services.

A **crèche** is provided for children under 3 (except in Family Services).

**Realm** is to be held 9 times this year. It is a vibrant and contemporary service

We meet for coffee/tea and cakes at 6.30pm and then begin at 7.00pm.

The next 2 meetings are on 2nd and 30th March

**Youth@Hope** Activities for children and teenagers take place on Sunday mornings at 10.30am and weekday evenings. A full programme of activities is available. Contact: Andrew Gardiner 791993

**Prayer** Prayer groups meet regularly as detailed in the termly programme card.

**Prayer chains** are used to share requests for prayer with the fellowship. Contact: Debbie Houston 709909 or Margaret Pendock 768957

**Mums & Babies** (0-8 months) Tuesdays 10.00 – 11.30 am Contact: Kelly Hopwood 518254

**Parents & Toddlers** Tuesday 12.45 – 2.45 pm and Wednesday 10.00 am – 12.00 pm and 12.45 – 2.45 pm term time only. Contact: Beryl Brown 778019

**Coffee Morning** Thursdays 10.15 am – 12.00 pm in the Church Hall. All welcome.

**Women's Rendezvous** An informal gathering of ladies from the fellowship and their friends who meet monthly. Contact: Jenny Weeks 777416

**Open House** Meet in the Church Hall on the 3<sup>rd</sup> Monday of each month at 2.15 pm. £1.50, refreshments included. Contact: Pam Smith 219844

**Men's Group** Social events for all men in the fellowship and their friends. Contact: David Brown 707577

**18s-30s** Programme of social activities and a fellowship group. Contact Kathryn Rundle 601013

**Fellowship Groups** Small groups meet for bible study, prayer and friendship at various times & days throughout the week. Contact: Helen Pugh 767124

# Spring has sprung !!

---

The blossom is already on the trees, all those flowers in our garden, that I don't even know the names of, are beginning to shoot, and the borders are taking shape.... **and it's only February!**

The papers are full of the fact that Spring has come early this year. Growth and life is taking place in unexpected places at what would seem to be much too early a time. Probably like you, I love Spring for the colours and the signs of summer on the way.

I love to see the signs of "Spring" in the church as well.

Signs that God is doing new things in the life of people who worship with us. Some have experienced new birth or new life in Christ, while others find that God is growing new things in their lives in unexpected ways.

Some have found a new sense of belonging in our fellowship.

Others have found God challenging them in ways of trust and growth.

Switching my metaphors for a moment, I have been interested to see the changing fortunes of Sainsbury's, with Jamie Oliver's endorsement, and encouragement to "try something new today". Judging from the figures, lots of people have taken the step and experimented with their fruit and veg habits, and have enjoyed the change and results in their cooking.

Spring is a time of change..time to break out of the winter habits and away from the winter wardrobe into some new things.....

**Let me dare to ask you two questions then:**

When did you last ask the Lord to do some new work in you?

When did you last make yourself available to take a step of faith into something new that God would use you in?

**Our Christian life should never be dull.** Our walk with God should not be one set in a deep rut ! When we step out in trusting in Christ in the adventure of a life of faith we are opening ourselves up to "something new" that God will do in us, and through us, as we allow Him to work in our lives. It says in 2 Corinthians 4 vs 16 that **day by day** we ARE being renewed. That means that every day can be a "Spring Day" .

Every day can be a Jamie Oliver Sainsbury's Day !!!

What are the "signs of Spring" in your life at the moment? *If you have read this article*, perhaps you can tell me one next Sunday, to prove to me that people do read what Andy and I write here....God bless you.....

Andrew

# Minister dons wig and runs off with Treasurer and Deacon!

---

Well, it got your attention, didn't it? Would you have read "Treasurer's report 2007" ?

Anyway, this actually happened; on Boxing Day 2007 a minister (I'll leave you to guess which one), Mark Henagulph and I ran off together round Burrator Reservoir in the annual Burrator run. The said minister had to remove the aforementioned wig on the way round as it hampered his aerodynamics. However, this blew his disguise completely!

I have just finished drawing up the 2007 financial statements and am delighted to report that income exceeded expenditure. Despite an improvement in income in the latter part of 2007, we didn't quite meet our offerings target. However, a surplus was still achieved due to additional rental income and cost savings thanks to our caretaker Honore, the administration team and our committees who managed their budgets well. We were able to fund the remainder of the building project from this surplus without having to eat into our emergency reserves as originally anticipated. Admittedly we did also use the bulk of the 2007 Thank Offering on the building work, but we still managed to send £2,000 to a project in Malawi.

By the time you read this, the figures will have been presented in detail to a members' meeting but to summarise, the key operational figures (rounded to the nearest £500) and taking out the building project and kitchen grants / loans are set out below:

<b>Income</b>	<b>£</b>	<b>% of total</b>
Offerings	68,500	52
Gift Aid Tax reclaimed	15,000	11
Rents from buildings	30,000	23
Other income	19,000	14
<b>Total</b>	<b>132,500</b>	
<b>Expenditure</b>	<b>£</b>	
Ministry & staff costs	70,000	57
Mission support	12,500	10
Building maintenance	11,000	9
Administration & other costs	29,500	24
<b>Total</b>	<b>123,000</b>	
Excess of income over expenditure	9,500	
Allocated to finish building project	<u>(5,000)</u>	
<b>Net surplus</b>	<b><u>4,500</u></b>	

I am personally grateful to all who have set up standing orders for their giving (a perfectly scriptural principle – see 2 Corinthians 9:7). It made the budget a lot easier to set for 2008 than for previous years. Indeed, thank you to all who join with us financially to make the Gospel of Jesus Christ known in this area and beyond.

Tony Jopson  
Treasurer



# Secretary' s Report

---

2007 – What a year! The building work finally successfully completed and paid for – an amazing achievement. After so much stress and strain experienced by the Building Development Committee led by Andrew and the date for completion being pushed further on it was wonderful on a lovely sunny Saturday at the beginning of February to have Linda Gilroy do the ‘ Grand Opening’ and for literally hundreds to come through our window on Peverell – that is the new entrance to enjoy the first fun day. The Celebration Service held on the Sunday afternoon when so many memories of Hope over the last 80 years were shared was a very moving yet uplifting occasion.

Looking back it' s incredible to see the growth within the Fellowship– whilst having the two services in the hall it was not entirely obvious how much. Not only with numbers coming to the regular Sunday Services but also the seasonal ones such as Christmas when we could barely fit another person in and we are still growing. Our membership at 31 December was 119.

We prayed for more musicians and wow we have them in abundance. What an experience when we have the ‘ big’ band. The Carol Singing in the locality was enriched by the 'brass accompaniment’ and enjoyed by all who came out to listen. We are blessed in our services by the music from the Worship Group.

So many new initiatives have emerged. The 18-30’ s Group, the Gospel Choir, who will forget their performance at the Carol Service, Realm adding another dimension to worship. The Lunch Club is proving to be a popular occasion and when the new kitchen is installed the aim is to open it up to the community. The Just Life group who have raised awareness of our responsibility towards the care of our planet.

Our Prayer Room has to be one of the most special places in the building. It can be used by the individual, for group prayer, a place to be prayed with, somewhere to contemplate on a theme and also somewhere we can welcome the community.

It is good that we have not sat back but are still striving to improve. We did this through ‘ Growing a Healthy Church’ , looking at making membership more meaningful, and the Vision Group seeking to find ways of moving forward and being more relevant within and outside the Fellowship.

During the year we have welcomed a new Youth Leader, Caretaker and Church Administrator. As we grow we need more management and so we are thankful to have appointed such loyal and dedicated people.

Our voluntary Ministerial Support Worker has proved a huge resource in supporting the Ministers, the Pastoral and Outreach Committees and those requiring prayer.

So many voluntary workers within our Fellowship give generously of time and commitment to the many demands of all the activities which take place. From one end of the week to another something is going on. This doesn't just happen it takes hard work in planning and preparation. The results are the success of these activities. It is impossible to mention everything and everyone who works quietly in the background doing those things which go un-noticed but are so important or what has happened or does happen throughout the year. What can be expressed however is how much it is appreciated.

Spiritually the Fellowship Groups continue to provide a good place to grow through studying God's Word, in prayer and discussing the themes of our Sunday services. The Prayer Catalyst provides us with so many opportunities to pray for and learn through prayer. We give thanks for them.

We pray for God's continued guidance and blessing for our Ministers, the Deaconate, the Committees and everyone with a leadership role as they continue to serve in this capacity.

Despite all the changes to the Sanctuary our God still reigns there because at the heart of everything we do it is to His glory. It has given us opportunity and freedom we did not have before and we must take full advantage of it.

As we look ahead to 2008 let us remember we are building on the labours of others who grasped God's vision for his work here in Peverell and that the fruit of this will be to see many come to faith and be baptised.

May we continue to look to Him in all we do and may we do it together as the body of Christ upholding and encouraging each other as we do so.

'Unless the Lord builds the house its builders labour in vain.' Psalm 127 v 1

Beryl Brown

# Minister' s Report

---

It is hard to believe that at the beginning of 2007 we had just started to regularly use the refurbished sanctuary. This was a huge undertaking, ably led by Andrew Gardiner, that has been widely appreciated by the fellowship and praised by the local community. The greater openness and visibility the foyer gives is symbolic of our desire to share all that Christ means to us in and with the local area.

In September we started a process of evaluation and vision-shaping called ' Growing a Healthy Church' . It was very encouraging to identify much strength in church life at Hope, particularly the warm and sensitive welcome that is given to newcomers, the effectiveness of youth work and the worship on a Sunday. There was also a sense that overall we are in good shape as a church, doing many things well and serving the local community positively through our work with parents of under 5' s and the new lunch club.

Looking to the future we identified a number of areas in which we would like to grow: discipleship, empowering all members to share in the work of the fellowship, caring for and including those who feel on the edge of a large fellowship, listening to God and to learn better how to handle disagreements and upsets in a healthy manner.

We have been very encouraged by the number of new members in 2007 and those that join us for worship on Sundays. Many of these are already Christians. Our greatest challenge as a church is to see people converted and discipled as followers of Jesus. Our culture seems very resistant to and suspicious of the church at present and I sense many Christians are lacking in confidence to share their faith openly and naturally. We hope to explore ways of overcoming these barriers in 2008.

Andy Saunders

## **Give Thanks**

---

The kitchen renovation will begin in April. Our thanks to all the folk who have offered around £7000 in gifts and interest free loans. Two grants amounting to £5,500 have been granted by the BU towards the kitchen project so we are now able to go ahead and start the work.

We have also been given the opportunity to acquire, for a very reasonable sum, nearly new stainless steel kitchen units that are no longer required by a care home that is closing down.

David Adams is looking for a team of helpers to assist him in dismantling the old kitchen and disposing of it and to help with the task of installing the new units, appliances etc and decorating the kitchen when the installation work is complete.

If you feel you can spare some time and effort to help Dave please get in touch with him as soon as you can so that he can plan the work.

We give thanks to God for prayers answered.

Jenny Weeks

## **Women' s Rendezvous**

---

On 16th January thirteen members of WR had an evening out at The Harvester Inn where we enjoyed dinner and a time to chat in an informal atmosphere.

Our AGM was held on Wednesday 23rd January. The committee was re-elected with the exception that Marian Brown has stepped down as joint leader and Christine Eascott has taken her place.

It was decided to adopt Plymouth Highbury Trust as our charity for 2008. This is a local charity that provides care and support to adults with learning difficulties and is situated near to our church in Outland Road. There have been links with the Trust for many years and it was felt that it would be good to have the Trust as our charity this year. We shall be holding a fund raising event later in the year.

Our programme for the coming year is varied and interesting. It includes speakers, visits, and BBQs. Anyone who would like to know more about WR, please see me, Jenny Weeks, Chris Eascott, or any member of the group and if you would like details of the programme please see Beryl Brown or ask any of the WR committee to let you have a copy.

An additional event that has been arranged this year is a visit to Ford Park Cemetery, which will take place on 9th July. We shall be having a guided tour of this Victorian Cemetery and a talk by a member of the Ford Park Cemetery Trust, Mrs Pat Luxford. Please make a note in your diaries of this date if you think you may like to join us for this evening visit to the cemetery. A small charge will be made which will go to the FPCT.

Jenny Weeks

## News from Spain

---

Many will remember Roger and Sheila Torpey who emigrated to Malaga some years ago. In a conversation with them both they told me they felt their move was God's plan for them and set about forming a church in a local hotel room. Their first Christmas there was memorable and the church grew; however there was a major upset which resulted in the church failing.

After the disappointment of failure it was a "black time" for them but God brought them through the trauma and they started again having learnt a lot. First they met in a room in a Roman Catholic Church and finally after meeting the Spanish Evangelical Alliance Representative, they used other church premises and worshipped an hour before the Spanish service. Once a month they share breakfast before the services then join together in Spanish.

Sheila plays the keyboard in the music group and both she and Roger feel fulfilled in the work of the church and are able to witness in many ways in the area.

During this year they will be moving to Eastern Spain where their daughter Jo is having a villa built. Apparently there are more established churches in that area and we pray that God will guide and bless them in the future.

Margaret Pendock

## Open House

---

This month we will be welcoming Mr Mike Turner who will be representing The Cavitron Fund on its 25<sup>th</sup> Anniversary. He will be telling us about the work and achievements of the Fund and the kind of job the Cavitron Machine does in treating brain and spinal tumours. There will be an opportunity to ask Mike questions and talk to him informally afterwards while we enjoy sandwiches and cake with a cup of tea. Our donations will be given to the Cavitron Fund. The date for your diary is Monday 17<sup>th</sup> March.

On April 21<sup>st</sup> our own Val Hart will be talking of her time working with The Samaritans when she lived at Guildford. This voluntary work must be quite challenging but very rewarding and I am sure that Val will put it over in a sensitive, loving way. Again, there will be a chance to ask her questions before afternoon tea. Val would like all proceeds to go to a similar Christian charity in Plymouth called "Crossline".

If you would like a lift to the meeting, telephone me, Pam Smith, on Plymouth 219844, to arrange a pick up time.

Our meetings start at 2.15 pm and we meet in the church hall. The suggested donation for afternoon tea is £1.50.

## Do you need ever a minibus..?

---

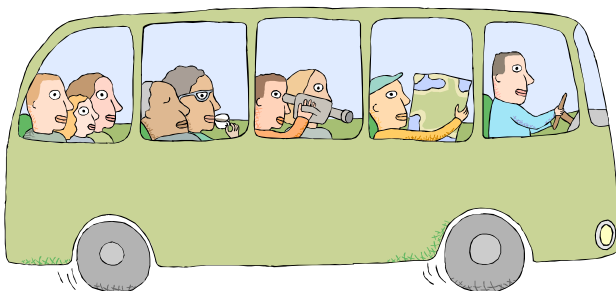
We at Hope are privileged to have our fantastic 17-seater minibus, but did you know it is available to (virtually) any one of you to use should you want to?

As we all know it doesn't run on thin air, in fact the insurance alone costs over £1000 every year, then there is road tax, MOT and repairs as well as fuel. This is why we lend our bus to other groups and churches and ask that in return they give us a contribution towards our running costs. In the same way it is available for private users for transporting friends and family on outings or to parties, whatever it is needed for, although we do not like it to be used for removing furniture or transporting rubbish to the tip etc.

All we ask is that the driver is over 25 with at least 2 years driving experience and hopefully with a clean licence – points would need to be declared and may affect whether that person would be eligible to drive the bus.

So how much does it cost to use..?

As we do not, in fact cannot, hire the bus out, we can only **suggest** a scale of donations. We suggest 50p per mile plus £5 per booking, although it is possible to negotiate a 'day rate' if it would be more appropriate. This compares extremely favourably with the cost of hiring a minibus.



Bookings can be made via Nicky and Paul Hatherell who co-ordinate the use of the bus, any donations should be passed via them too.

## March Diary

---

Sun	02	1030	Morning Worship ' Give Us' Matt 6:23-4
Sun	02	1900	Realm (tea and biscuits at 1830)
Fri	07	1400	Women' s World Day of Prayer at Pennycross Methodist Church
Sun	09	1030	Morning Worship ' Forgive Us' Matt 18:15 35
Sat	15	1915	Quiz Night
Sun	16	1030	Holy Communion ' Deliver Us' Matt 26:35-6
Mon	17	1415	Open House, The Cavitron Fund
Thurs	20	1930	Maundy Thursday Communion, St Pancras Church
Fri	21	1030	Good Friday Family Service followed by March of Witness
Sun	23	0700	"Sonrise" Service, Clearbrook
Sun	23	1030	Easter Sunday Family Service
Sun	30	1030	Morning Worship ' When The Going Gets Tough' 1 Peter 1:1-12
Sun	30	1900	Realm (tea and biscuits at 1830)

## April Diary

---

Sun	06	1030	Morning Worship ' Action Stations' 1 Peter 1:13-2:3
Sun	13	1030	Morning Worship ' God the Builder: Can He Fix Us?' 1 Peter 2:4-25
Sun	20	1030	Holy Communion ' Getting Relationships Right' 1 Peter 3
Mon	21	1415	Open House, The Samaritans
Sat	26	1800	Peeverell' s Got Talent!
Sun	27	1030	Family Service

## **Weekly events**

---

Tuesday	10 – 11.30am	Mums and Babies
Thursday	10.15 – 12 noon	Coffee Morning in the Hall

## **Weekly events term time only**

---

### **Parent and Toddlers**

Tuesday	1245 – 1445
Wednesday	1000 – 1200
	1245 - 1445

### **HY-Powered (school years 3-6)**

Thursday	1830 – 2000
----------	-------------

### **The Hype (school years 7 – 9)**

Friday	1900 – 2130
--------	-------------

### **RE-ACT (school years 10 – 13)**

Friday	2015 – 2200
--------	-------------

## **The Outlook**

---

This edition of the Outlook had been edited by Helen Pugh. The deadline for articles for consideration for the May/June 2008 Outlook is:

**Sunday 13<sup>th</sup> April**

Please send articles for consideration for the next issue to  
Claire Preston

**[claire.preston888@btinternet.com](mailto:claire.preston888@btinternet.com)**

Please note, all articles forwarded by email will be acknowledged

---

# The Lord' s Prayer in Maori

---

We are currently learning about the Lord' s Prayer in our sermons and Fellowship Groups. Many people know the Lord's prayer so well it is easy for us not to think about the words. This reflection on a Maori translation reminds us that our bible is translated from Greek and helps us think about the meaning of the words we use.

E to matou Matua I te rangi  
Kia tapu tou Ingoa.  
Kia tae mai tou rangatiratanga.  
Kia meatia tau e pai ai  
ki runga kit e whenua,  
kia rite ano ki to te rangi.

Homai ki a matou aiane  
he taro ma matou mo tenei ra.

Murua o matou hara,  
Me matou hoki e muru nei  
io te hunga e hara ana ki a matou.

Aua hoki matou e kawea kia whakawaia;  
Engari whakaorangia matou I te kino:

Nou hoki te ranatiratanga, te kaha,  
me te kororia  
Ake ake ake. Amine.

## A caring, loving parent

In looking at the Maori text it is not satisfactory just to parrot words that are seemingly equivalent to the English. One needs to feel the pull of the Maori words in order to be nourished by them spiritually.

In the first line of the prayer the word Matua is used as an equivalent to Father; but Matua in the Maori phrase is really a much bigger word. It can mean parent – a female as well as a male, suggesting the caring, loving, disciplining, helping, protecting things we want to see in God. It imparts a deeper aspect to the phrase of the prayer.



The second line contains two important words: tapu and Ingoa. Many Maori, and also Pakeha, regard tapu as meaning forbidden. It is also descriptive of reverence, respect, honour – feelings aroused by thoughts of God. God is indeed being treated as very special and important.

Ingoa, meaning name, is very important to many people of all races, and here it reflects the special and important character of God.

In the next line appears the word rangatiratanga – the chiefly rule of a rangatira. To many Maori rangatira means the chief, the boss, the big one. In Maori society rangatira implies responsible leadership, guidance, education and nurture of the people. Here is regarded a God who creates an environment for his people, one who cares and protects and to whom there is loyalty as part of a relationship. The Maori prayer asks for the arrival of such a chiefly rule.

The words Kia meatia...are highly idiomatic and the line in which they appear may be translated May it happen in the way that is to you [God] good; the prayer continues with the plea May it happen in the same way on earth as in Heaven.

Taro, used as an equivalent to bread, covers food that is useful to the Maori in all sorts of situations. It is the food of life, the staff of life, everything needed for human life. Used after homai (give) it incorporates a completely comprehensive request to God for daily support.

Muru, the first part of the word commencing the ninth line, recalls an ancient Maori practice whereby upon a person's death, his or her contemporaries would descend upon the deceased's house and strip it of all the goods it contained.

In effect, the Maori prayer says Come muru us; seize and take away everything bad: our sins, all that has gone wrong; all that will stop us being with you, God. Muru is a very powerful word.

The phrase Lead us not into temptation has always created problems and arguments among Biblical scholars. The Maori translation is not

much help, though it is closer to the old form of prayer than the modern Save us from the time of trial. The Maori version asks God not to lead us into the enticements; and one immediately questions whether God in fact entices us into wrong doing, or is it God' s aim to make us strong to resist transgressions? Christians certainly get themselves into situations where they are tempted and they hope they will not be put in a position where they much choose between their faith and death.

Deliver us from evil has been expanded into the Maori line beginning

Engari... It contains the word Whaka -ora-ngia which itself includes ora, an important component of the greeting Kia Ora. Ora is life, health, wellbeing happiness. It suggest the Hebrew word Shalom, but it comprehends not only peace but also life, salvation, wholeness. The Maori prayer says, May you be a whole person, away from things evil; may you have life.



The Maori translation ends with an invocation that God be glorified because of that rangatiratanga, that power and glory attributed to God early in the prayer.

**This article is re-printed with permission and comes from a brochure produced by Christchurch Anglican Cathedral, New Zealand, text by Bishop George Connor, Anglican Bishop of Dunedin, NZ**

## **Community Quiz Night**

---

Following on from the success of our previous Community Quiz Nights, we would love to invite you to enter a team into the 2008 event, which will be held on Saturday 15 March 2008, at 7.15pm. Teams of 6 can be made up from anyone you would like to represent your business / organisation /community group (e.g. friends or neighbours), but no under-16' s please.

The cost is £12 per team, which will include a pasty and soft drinks.

## **RSVP**

For catering purposes teams need to be registered; please telephone either Debbie Houston on 709909 or Nicky Hatherell on 770186

## **Women' s Wbrld Day of Prayer**

---

This year's service for the Peverell area will be held on Friday 7th March at Pennycross Methodist Church at 2p.m. The service has been prepared by Christian women of Guyana, and the theme is "God's Wisdom Provides New Understanding". The service, as always, is interdenominational and ladies from six local churches will be taking part. The speaker will be Danie Neads, the youth worker at Pennycross Methodist who helped to lead our joint service there in January.

The service is intended for women, men and young people and lasts just an hour, followed by refreshments. It seems likely that this will be the last time we shall have a Women's World Day of Prayer service in Peverell, and it would be good to see Hope well represented. Do come if you can!

Jean Potter

## Tina Mann encourages us to listen out for Gods voice

---

It's sometimes funny how God speaks. There are various ways He communicates to us individually and because He knows us inside out, He knows the best way to get our attention. But firstly let's remind ourselves that God does speak and we can all hear His voice.

*"My sheep recognise my voice; I know them and they follow me." John 10:27*

If we believe that Jesus is our Shepherd and we are His sheep, then we can hold on to this truth. Don't think just because you have not heard a direct voice from heaven that God doesn't talk to you. There are many ways He speaks to us and more often than not it's more of a gentle whisper than a booming voice from the sky!

God speaks through dreams, visions, pictures or through what you read. For example you could be reading a bit in the Bible and all of a sudden, it's like the words jump out at you. It's as if they were only written just for you for that exact time to help you. This is God through his Spirit highlighting scripture so He can speak into your situation, maybe giving you guidance or a promise to hold on to. These moments are precious and are a reminder of how close God is to us and how much He cares about our lives. It's amazing to think that the God who created the whole universe delights in speaking to His children!

He also uses what we hear whether it be something our friend said or what we heard said in Church, at school etc. It's as if there is something in your conscience that suddenly awakens and revelation comes in that split second. This is God speaking! Let's expect God to reveal to us what He wants to say at any time. He is not confined to the Church, the Bible or Christian gatherings, no He can use movies, advertisements, ordinary situations to communicate to us. Recently God spoke to me in quite a unique way but it definitely caught my attention.

Being a dancer and choreographer I am very used to teaching others and leading the way because of years of experience. However a few weeks ago I tried Salsa, something I had never done before. I loved it! Firstly dancing with a partner took some getting used to but then having to let them lead was a struggle. Over the course of the Salsa session all I kept hearing from my dance partners was: 'You have to let me lead, relax and enjoy being led!' To start with I was terrible but the more I did relax and let them lead the more I enjoyed it and the better I became. After hearing these words numerous times throughout the night, it suddenly dawned on me that this was what God had been saying to me for some time, way before the Salsa lesson. To give all control to Him, put my life into His hands and trust Him to lead me. The more I continued to do this the more I would enjoy my relationship with Him and the journey He is taking me on. WOW! Who would have thought dancing would teach me so much!

So what am I saying?

**Be open to the God of the Universe wanting to speak directly to you.**

He wants to be involved in every area of your life.

Believe He does speak and you can hear Him.

Be prepared for Him to speak in unusual ways. Get ready to know Him better!

**This article is re-printed with permission and was originally published by Cross Rhythms  
[www.crossrhythms.co.uk](http://www.crossrhythms.co.uk)**

**You can tune into Cross Rhythms radio in Plymouth on 96.3FM**  
*The opinions expressed in this article are not necessarily those held by Cross Rhythms.*



# Letter from Plymouth Women' s Refuge

---

May I take this opportunity to thank all those who so kindly contributed to the toy service; it was hugely warming to see such generosity, it really does make such a difference.

Women' s Refuge is staffed 365 days a year with 24hr assistance. It is clearly evident that incidents of domestic abuse (those reported) rise at Christmas, it can be a traumatic and distressing time for many, at Refuge we take admissions throughout this period or assist in sourcing alternative safe accommodation should we be full, we generally run to capacity.

The women/families we support come from all sectors of society; it' s a classless crime that often results in total severance from all that is familiar, dear and precious. Women arrive with very little, either to avoid alerting the perpetrator or due to rapid escape. You can only imagine just how incredibly challenging this is, particularly if you have children and arrive on Christmas Eve.

Our children, like all other children world wide, anticipate a visit from Father Christmas and like other children they hope to be found. It is crucial to maintain a sense of normality particularly during the festive period and to be able to relieve the worry of anxious mums and children.

Your church has given us tremendous support and shown continued kindness without which we would face great difficulty at this time.

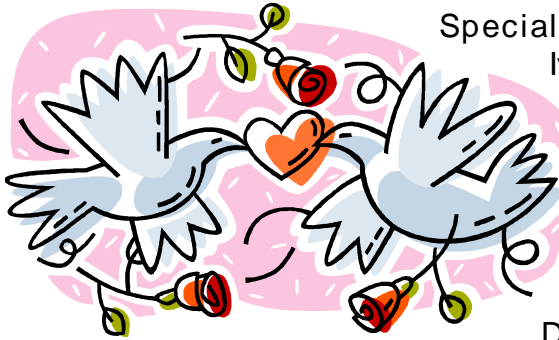
It' s almost difficult to articulate just how much your support means to us, to our children.

On behalf of our families and the team at Refuge, Thank you.

## In Flight Thoughts!

---

David and Margaret Pendock would like to thank all those who shared in their wedding day and made it so special for us! Thank you all for your gifts to our favourite charities and other gifts; for the nigh on 200 greetings cards obviously specially chosen for us; we are so grateful.



Special thanks to Andy, Andrew, Ivor and Chris without whom it would have been a mundane affair! We look forward to serving the Lord together at Hope

David and Margaret Pendock

## BMS Birthdays

---

The total amount collected for 2007 was £175.50.

Many thanks to all of you who make a gift each year on your birthday. All the money collected goes to the medical work of the BMS. If anyone is interested in joining this worthwhile scheme, please have a word with me.

Beryl Chun

### March

01 Tim Hart

### April

23 Beryl Brown

Saturday 14<sup>th</sup> June

2008

At

Plymouth College

Auditorium

7:30 – 11:30pm



Ball

Summer

In aid of Mission Work abroad

Adults £15:00

Students £10:00 ~ including live band and buffet

bring your own drink

Contact Janet Bowman ~ Powell on (01752) 511392

## Church Flower Arrangements for March 2008

---

- 2<sup>nd</sup> Flower Fund  
9<sup>th</sup> Sue & Ed Holt. To celebrate their Wedding Anniversary and Angela and Keith Robinsons' Wedding Anniversary.  
16<sup>th</sup> Flower Fund  
23<sup>rd</sup> Beryl and Peter Brown. To celebrating their Wedding Anniversary.  
30<sup>th</sup> Mrs Val Hart. Remembering Daniel and Dad. Also to celebrate two Wedding Anniversaries; Andy and Karen' s Silver, and Jo and David' s 20<sup>th</sup>.

## Church Flower Arrangements for April 2008

---

- 6<sup>th</sup> Mr and Mrs Pendock. In loving memory of David' s parents.  
13<sup>th</sup> Mrs Kim Brown. In loving memory of her mother.  
20<sup>th</sup> Flower Fund  
27<sup>th</sup> Mrs Judith Pinch. In loving memory of her parents, Hilda and Tom Stevens.



# Who' s Who at Hope

---

<b>Minister</b>	<b>Andy Saunders</b>	<b>772809</b>
<b>Minister</b>	<b>Andrew Gardiner</b>	<b>791993</b>
Secretary	Beryl Brown	778019
Treasurer	Tony Jopson	781792
ALPHA	Andy Saunders	772809
Administrator	Justine Spence	708090
Caretaker	Honore Iyakaremye	
Booking Secretary	via Church Office	708090
Youth@Hope	Andrew Gardiner	791993
Parent and Toddlers	Beryl Brown	778090
Fellowship Groups	Helen Pugh	767124
Women' s Rendezvous	Jenny Weeks	777416
Prayer Chain	Margaret Pendock	768957
Open House	Pam Smith	219844
Men' s Group	David Brown	707577
Minibus Bookings	Paul & Nicky Hatherell	770186
Mums and Babies	Kelly Hopwood	518254
The Outlook	Claire Worrall	700739
	Helen Pugh	767124
Flower Co-ordinator	Pam Smith	219844

## **Church Office**

Monday – Friday                      10am – 2pm                      708090

Email : [hope-baptist-church@tiscali.co.uk](mailto:hope-baptist-church@tiscali.co.uk)

Website [www.hopebaptist.net](http://www.hopebaptist.net)



“Hope in the Lord”